



**SECURITY MIRROR
INDUSTRIES LIMITED**

ADJUSTABLE FLAT
DETECTION MIRROR
SERIES

AFDM

CHANNEL FRAME

One piece frame formed of 3 / 8 " (9.53mm) X 1/2" (12.7mm) X 3 / 8 " (9.53mm) type T430 BA stainless steel. Frame has square, tightly mitered corners, with unique concealed screw fixings to ensure easy field mirror replacement. Plastic protective coating placed on frame.

MIRROR

No.1 selected polished 3 mm float glass with chemically deposited silver, electrolytically copper plated followed by a heavy coating of tough elastic paint. Mirrors conforming to GSB 12-GD5A Type B and guaranteed against silver spoilage for a period of ten years.

STOCK SIZES *

10" (254mm)	12" (305mm)
12" (305mm)	16" (404mm)
18" (457mm)	18" (457mm)
16" (404mm)	24" (606mm)
20" (508mm)	30" (757mm)
24" (606mm)	30" (757mm)
24" (606mm)	36" (909mm)

Weight: 4 lbs / sq. ft (NOT BOXED)

GLAZING OPTIONS

Acrylic Mirror

Stainless Steel Mirror



*BACK



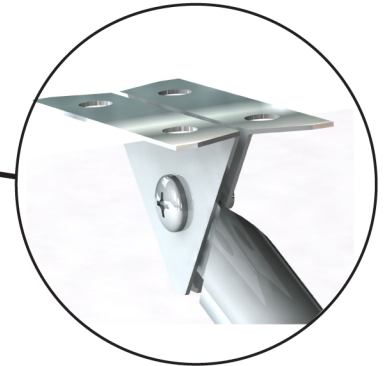
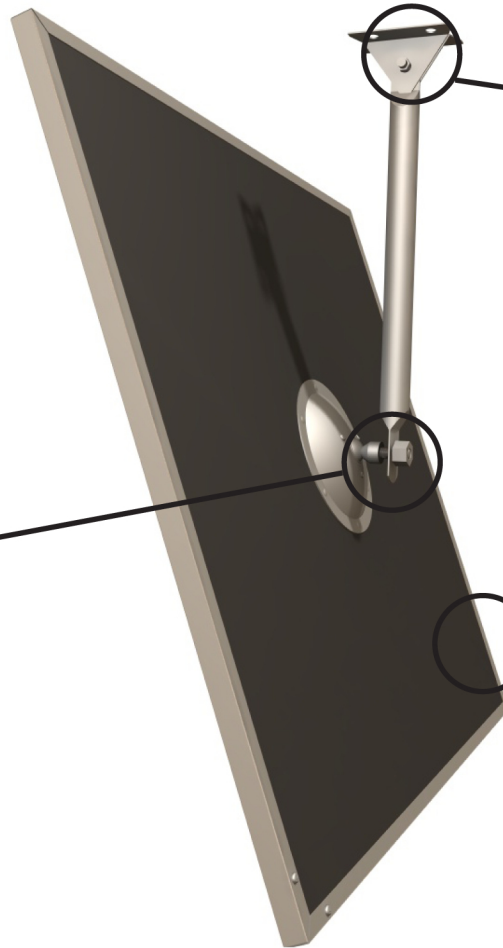
**SECURITY MIRROR
INDUSTRIES LIMITED**

ADJUSTABLE FLAT
DETECTION MIRROR
SERIES

A F D M

FEATURES

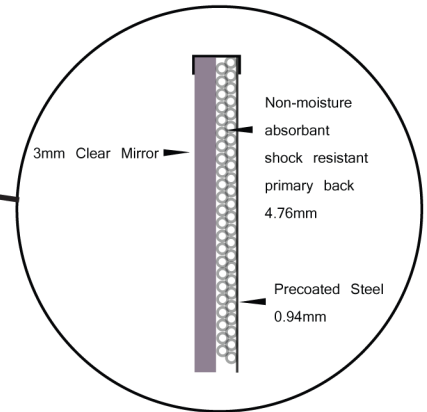
Mirror is protected with a 3/16" (4.76mm) non moisture absorbent shock resistant primary back. This material will not absorb or retain moisture and cushions the mirror by absorbing shocks. The secondary back is of 0.37" (.94mm) satin coat steel.



Attach to ceiling or wall



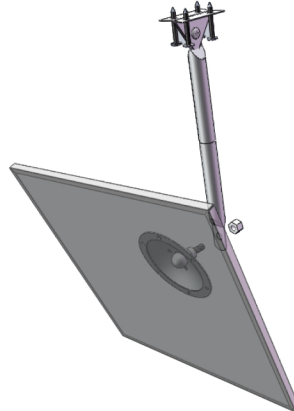
Swivel Mount



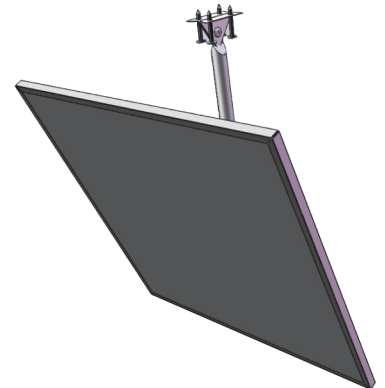
INSTRUCTIONS



Mount arm(s) in desired location



Attach arm to swivel ball



Back off 1 or 2 screws on hub
1/2 turn only adjust angle of mirror,
retighten hubs screws