

**SECURITY MIRROR  
INDUSTRIES LIMITED**

STAINLESS STEEL  
ANGLE FRAMED MIRROR

# SERIES 3285

## ANGLE FRAME

Frame is rigidly formed of 3/4" (19mm) X 5/8" (16mm) type 304, 18 gauge #4 brush finished stainless steel. All mitered corners are heliarc welded, ground smooth and polished to a #4 brush finish.

## MIRROR

No.1 selected polished 5mm float glass with chemically deposited silver, electrolytically copper plated followed by a heavy coating of tough elastic paint. Mirrors conforming to CGSB 12.5-86 Type 1B, and guaranteed against silver spoilage for a period of ten years.

## STOCK SIZES

16" (404mm)	24" (606mm)
16" (404mm)	30" (757mm)

18" (454mm)	24" (606mm)
18" (454mm)	36" (909mm)

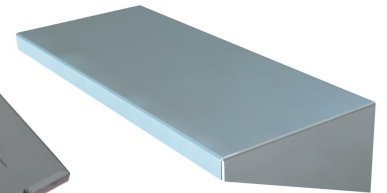
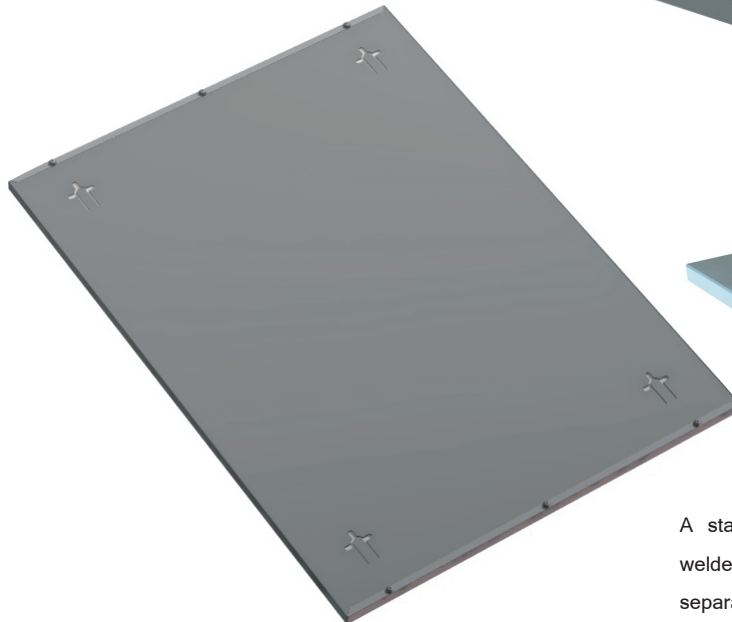
24" (606mm)	30" (757mm)
24" (606mm)	36" (909mm)

Custom Sizes Available

Weight: 6.5 lbs / sq. ft (NOT BOXED)

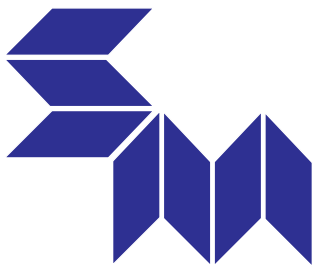
## GLAZING OPTIONS

- Acrylic Mirror
- Tempered Mirror
- Laminated Mirror
- Stainless Mirror



A stainless steel shelf, 5" (127mm) deep welded and polished is available for separate mounting below all mirrors.

\*BACK



**SECURITY MIRROR  
INDUSTRIES LIMITED**

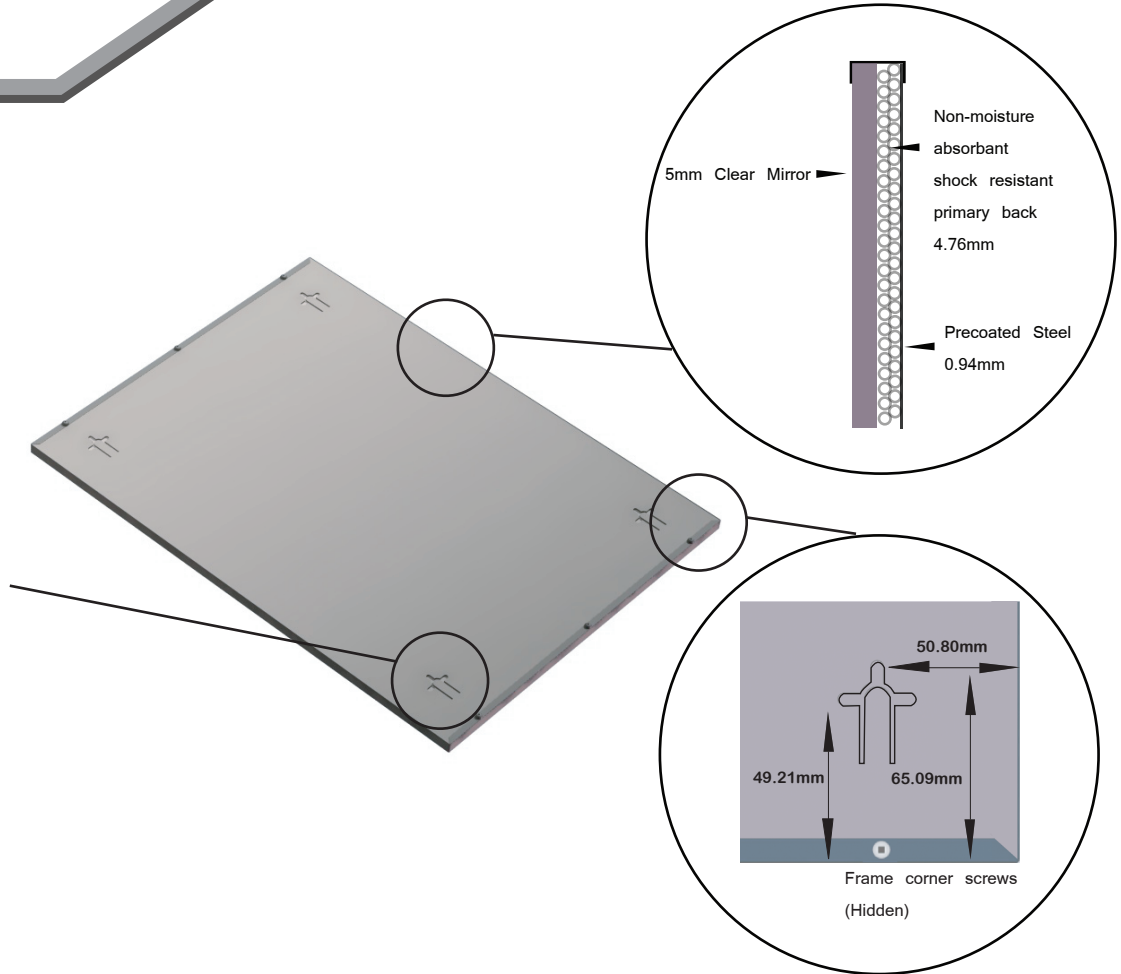
STAINLESS STEEL  
ANGLE FRAMED MIRROR

# SERIES 3285

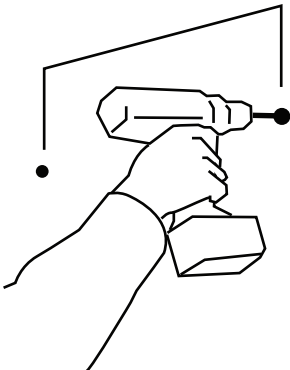
## FEATURES

Mirror is protected with a 3/16" (4.76mm) non moisture absorbant shock resistant primary back. This material will not absorb or retain moisture and cushions the mirror by absorbing shocks. The secondary back is of 0.37" (.94mm) satin coat steel.

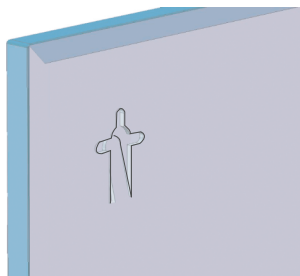
Three way keyhole slots, for either vertical or horizontal mounting, together with theft resistant clips assure a vandal resistant secure wall mounting.



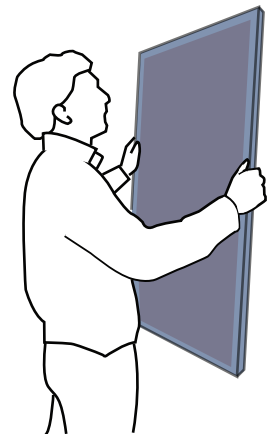
## INSTRUCTIONS



1. Mark on wall, and drill.



2. Clover Leaf tab will push in as mirror is pushed against screw in wall.



3. Once Mirror is against wall, push mirror down or sideways. Tab will then spring up to stop head of screw from coming back out of slot.