



**SECURITY MIRROR
INDUSTRIES LIMITED**

STAINLESS STEEL
CHANNEL FRAMED MIRROR

SERIES 855

C/W
Integral shelf

CHANNEL FRAME

One piece frame formed of 3/8" (9.53mm) X 1/2" (12.7mm) X 3/8" (9.53mm) type T430 BA stainless steel. Frame has square, tightly mitered corners, with unique concealed screw fixings to ensure easy field mirror replacement. Plastic protective coating placed on frame.

MIRROR

No.1 selected polished 5 mm float glass with chemically deposited silver, electrolytically copper plated followed by a heavy coating of tough elastic paint. Mirrors conforming to GSB 12-GD5A Type B and guaranteed against silver spoilage for a period of ten years.

STOCK SIZES *

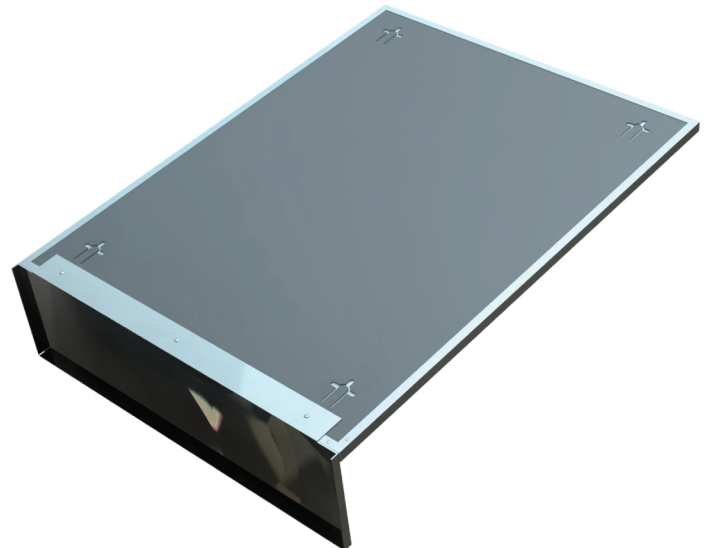
Width	Height
16" (406mm)	24" (609mm)
16" (406mm)	30" (761mm)
18" (457mm)	24" (609mm)
18" (457mm)	30" (761mm)
18" (457mm)	36" (914mm)
24" (609mm)	30" (761mm)
24" (609mm)	36" (914mm)

* Custom Sizes Available

Weight: 4 lbs / sq. ft (NOT BOXED)

GLAZING OPTIONS

- Acrylic Mirror
- Tempered Mirror
- Laminated Mirror
- Stainless Steel Mirror
- 6mm Mirror



*BACK



**SECURITY MIRROR
INDUSTRIES LIMITED**

STAINLESS STEEL
CHANNEL FRAMED MIRROR

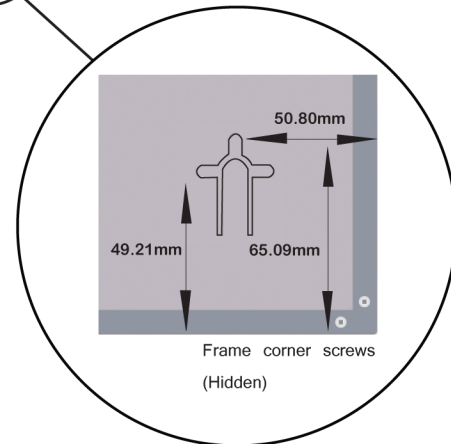
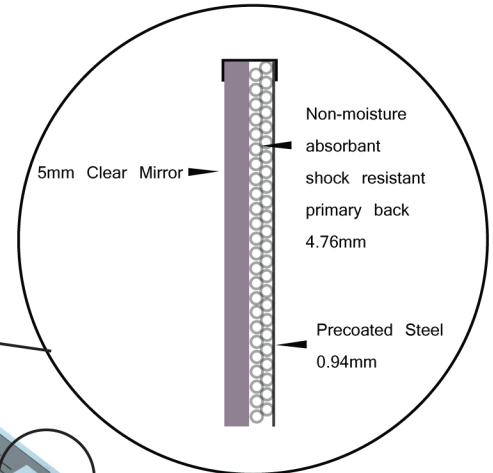
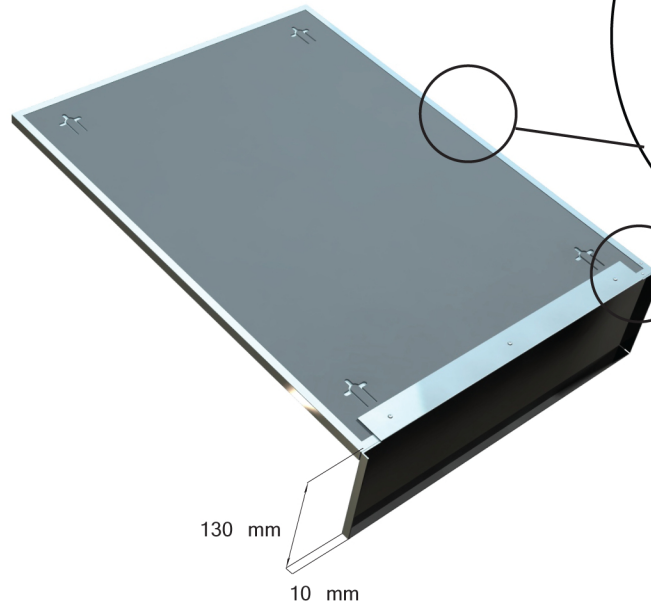
SERIES 855

C/W
Integral shelf

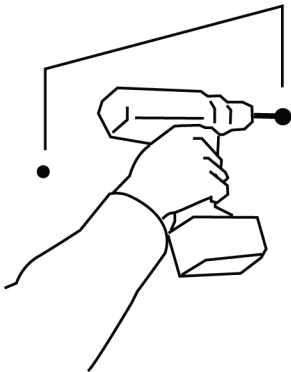
FEATURES

Mirror is protected with a 3/16" (4.76mm) non moisture absorbent shock resistant primary back. This material will not absorb or retain moisture and cushions the mirror by absorbing shocks. The secondary back is of 0.37" (.94mm) satin coat steel.

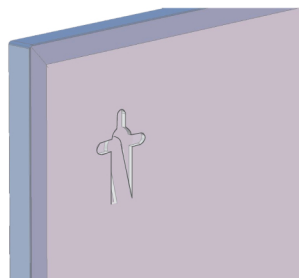
Three way keyhole slots, for either vertical or horizontal mounting, together with theft resistant clips assure a vandal resistant secure wall mounting.



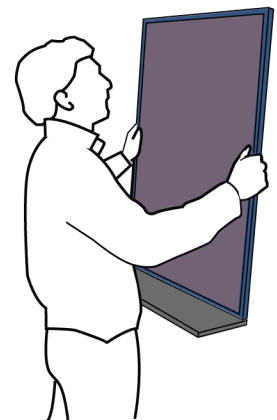
INSTRUCTIONS



1. Mark on wall, and drill.



2. Clover Leaf tab will push in as mirror is pushed against screw in wall.



3. Once Mirror is against wall, push mirror down or sideways. Tab will then spring up to stop head of screw from coming back out of slot.