



**SECURITY MIRROR
INDUSTRIES LIMITED**

STAINLESS STEEL
PRISON MIRROR

SERIES 3300

FRAMELESS

Fully laminated with ¼ " thick masonite complete with 4 mounting holes and 4 stainless steel # 10 X 1 ½ " R.H one-way tamper proof screws.

MIRROR

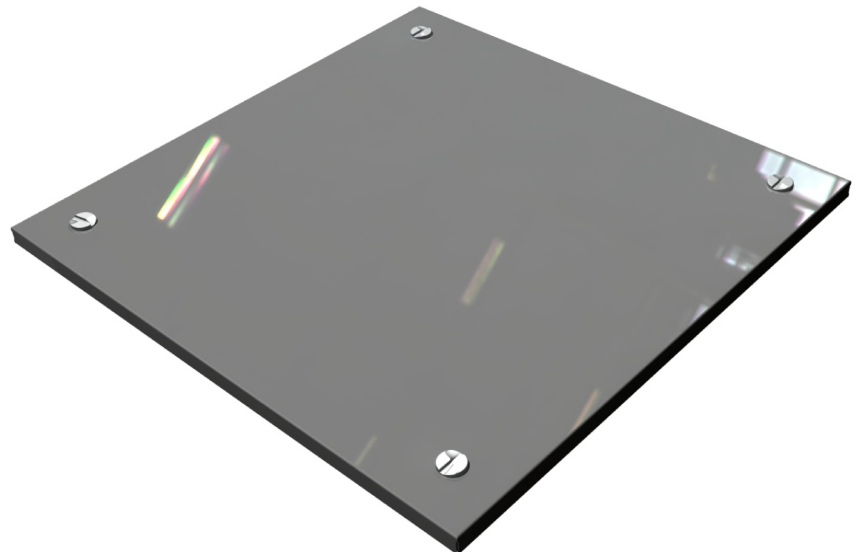
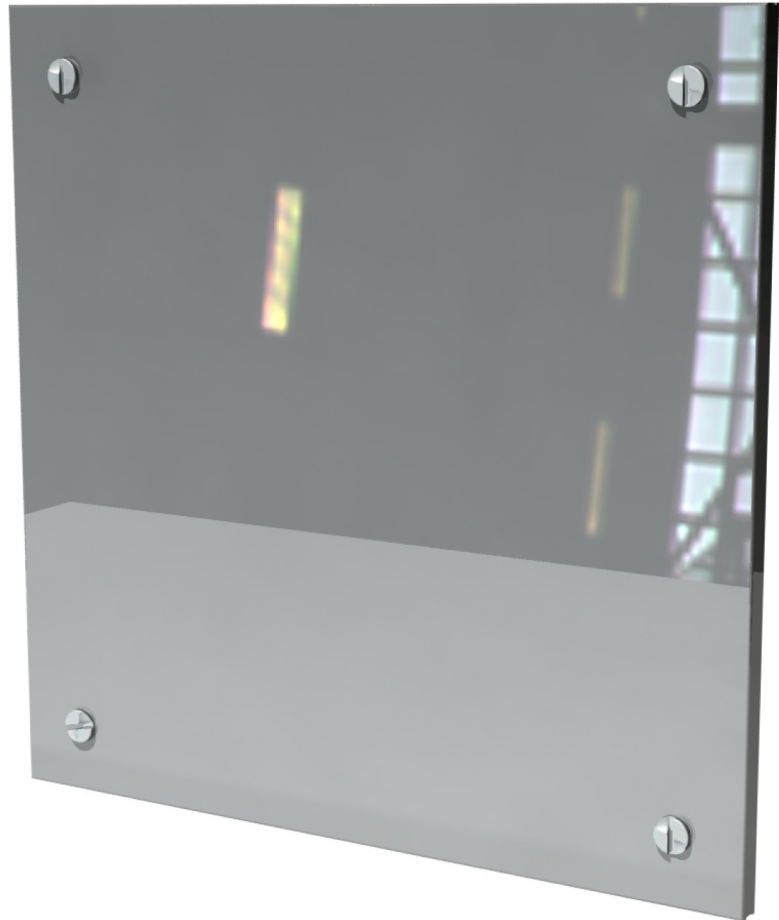
The 3300 series is a one piece 1/4" side formed 304 stainless steel mirror. Finish in Excel Buff # 8 finish Gauge 20.

STOCK SIZES *

Width	Height
16" (406mm)	24" (609mm)
16" (406mm)	30" (761mm)
18" (457mm)	24" (609mm)
18" (457mm)	30" (761mm)
18" (457mm)	36" (914mm)
24" (609mm)	30" (761mm)
24" (609mm)	36" (914mm)

* Custom Sizes Available

Weight: 5 lbs / sq. ft (NOT BOXED)



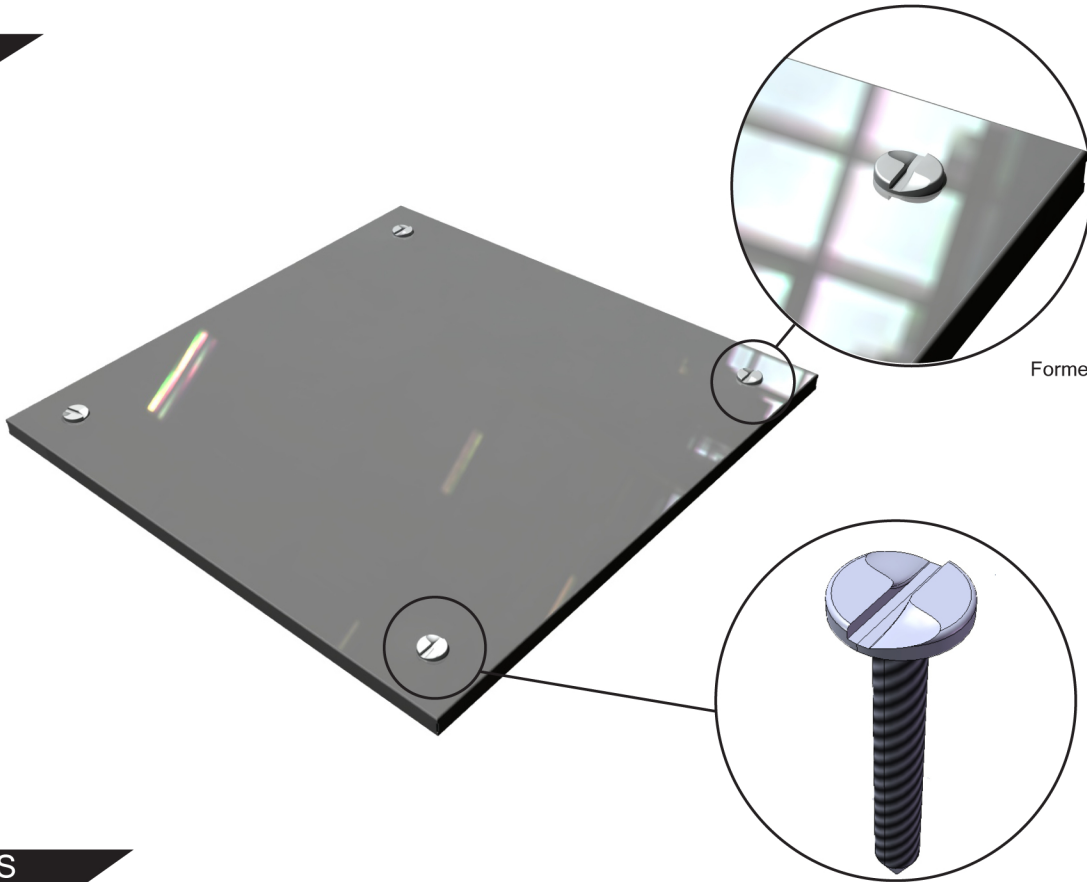


SECURITY MIRROR
INDUSTRIES LIMITED

STAINLESS STEEL
PRISON MIRROR

SERIES 3300

FEATURES



Formed edges 1/4" deep.

INSTRUCTIONS

