



**SECURITY MIRROR
INDUSTRIES LIMITED**

HEAVY DUTY STAINLESS STEEL
ANGLE FRAMED MIRROR

SERIES 3200^{HD}

ANGLE FRAME

Frame is rigidly formed of 3/4" (19mm) X 1" (25mm) type 304, 18 gauge #4 brush finished stainless steel. All corners are heliarc welded, ground smooth, and polished to #4 brush finish.

MIRROR

No.1 selected polished 6mm float glass with chemically deposited silver, electrolytically copper plated followed by a heavy coating of tough elastic paint. Mirrors conforming to GSB 12-GD5A Type B, and guaranteed against silver spoilage for a period of ten years.

STOCK SIZES*

Width	Height
16" (406mm)	24" (609mm)
16" (406mm)	30" (761mm)
18" (457mm)	24" (609mm)
18" (457mm)	30" (761mm)
18" (457mm)	36" (914mm)
24" (609mm)	30" (761mm)
24" (609mm)	36" (914mm)

* Custom Sizes Available

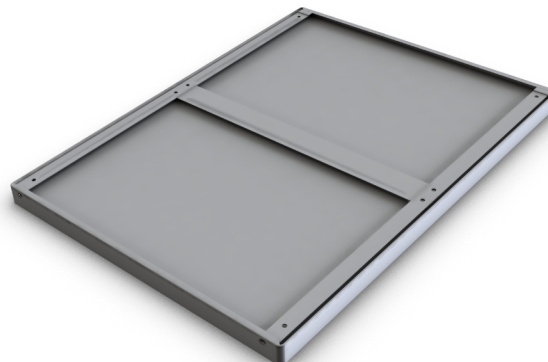
Weight: 7 lbs / sq. ft (NOT BOXED)

GLAZING OPTIONS

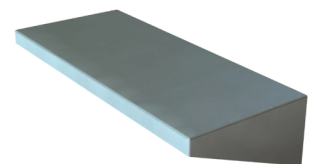
- Acrylic Mirror
- Tempered Mirror
- Laminated Mirror
- Stainless Steel Mirror



- 6mm clear mirror
- Safety scrim backing
- 24ga Satin Coat Steel Back
- Extra Duty "H" Bracket Hanger
- Full 1" thick 18ga #4 Brush Frame



*BACK



A stainless steel shelf, 5" (127mm) deep welded and polished is available for separate mounting below all mirrors.



**SECURITY MIRROR
INDUSTRIES LIMITED**

HEAVY DUTY STAINLESS STEEL
ANGLE FRAMED MIRROR

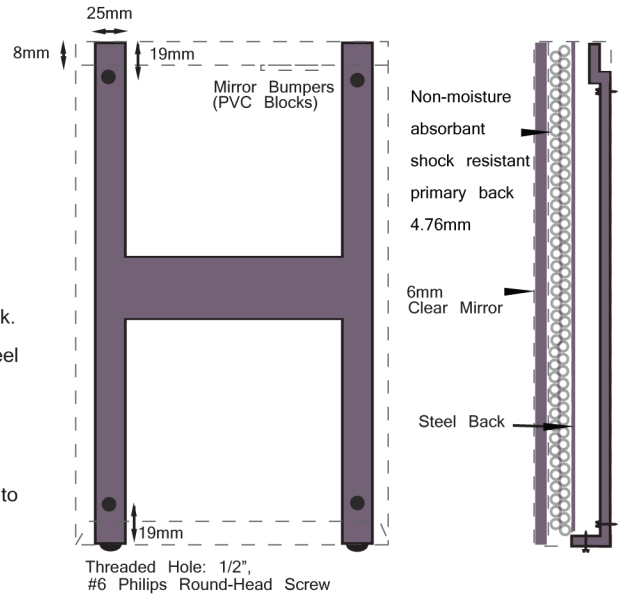
SERIES 3200_{HD}

FEATURES

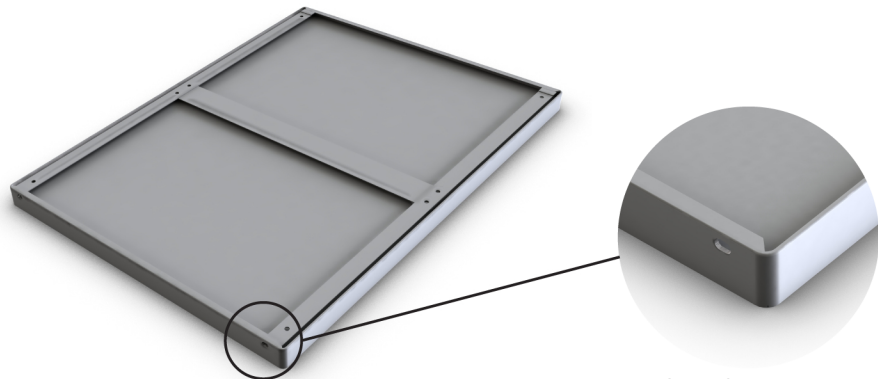
No.1 selected polished 6mm float glass with chemically deposited silver, electrolytically copper plated followed by a heavy coating of tough elastic paint. Mirrors conforming to GSB 12-GD5A Type B, and guaranteed against silver spoilage for a period of ten years.

Mirror is protected with a 3/16" (4.76mm) non moisture absorbant shock resistant primary back. The secondary back is of 0.37" satin coat steel space.

Mirrors to be safety scum backed, taped, siliconed, suspension glazed with PVC blocks to have a minimum 3/8" (10mm) back free air



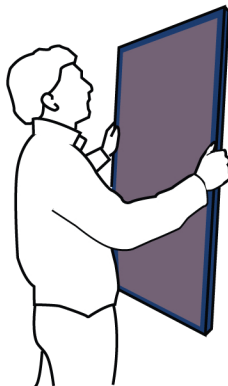
Newly designed wall hanger (H bracket) formed of two verticals, 1" (25mm) 16 gauge satin coat steel and one horizontal, 1 1/2" (38mm) 24 gauge steel spot welded together. Fully conceals mechanical fixings assuring a vandal resistant secure wall mounting.



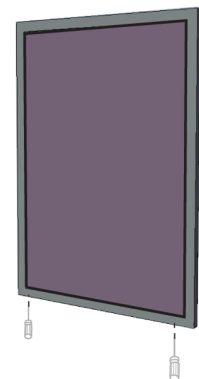
INSTRUCTIONS



1. Screw H bracket to wall



2. Place top of mirror frame over top tabs of H bracket



3. Screw bottom H bracket screws up until mirror frame fits over screws. Insert thin screw driver up through bottom holes in mirror frame and back H bracket, screw down until tight