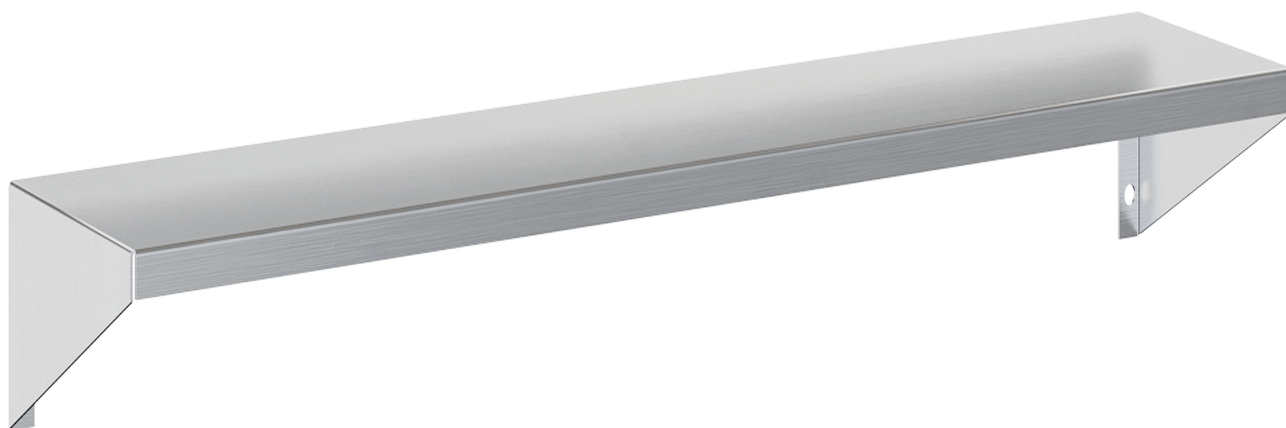
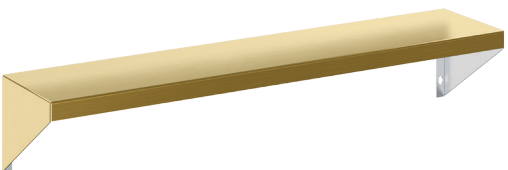


855 Steel Shelf



Brushed
Steel



Brushed
Gold



Brushed
Bronze



Brushed
Black

FEATURES

One piece shelf formed of type T304 stainless steel available in brushed steel, or powder coated white or black finishes. Shelf features square, tightly mitered corners and a plastic protective coating.

OPTIONS

- 4" (101 mm) min. depth , up to 12" (304mm) max.
- 12" (304mm) min. length, up to 96" (2348mm) max. length

STOCK SIZES

Length	Depth
18" (457mm)	5" (127mm)

Custom Sizes Available