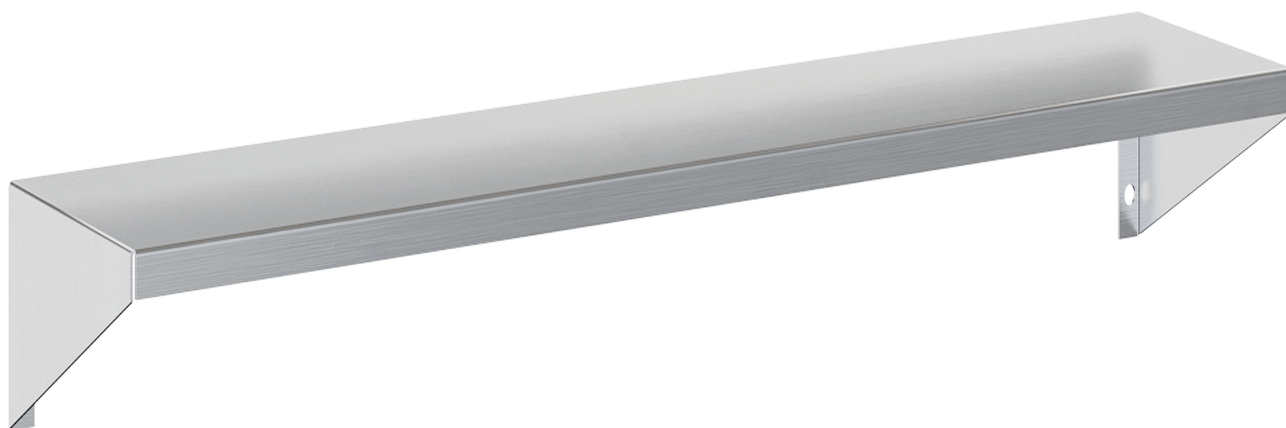


3205 Steel Shelf



Brushed
Steel



White
Powder
Coat



Black
Powder
Coat

FEATURES

One piece shelf formed of type T304 stainless steel available in brushed steel, or powder coated white or black finishes. Shelf features square, welded corners and a plastic protective coating.

OPTIONS

- 4" (101 mm) min. depth , up to 12" (304mm) max.
- 12" (304mm) min. length, up to 96" (2348mm) max. length

STOCK SIZES

Length	Depth
18" (457mm)	5" (127mm)

Custom Sizes Available