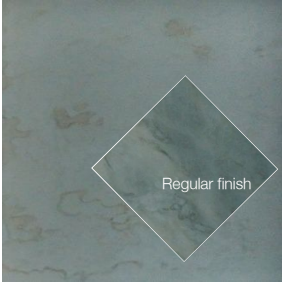




Acid Etched *Antique Mirror*

Creates a more subtle, non-reflective matt finished look



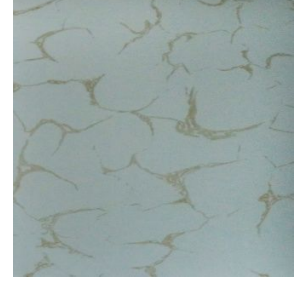
9100A



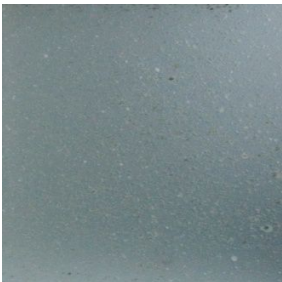
9103A



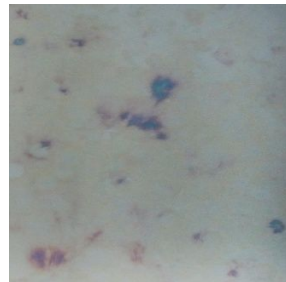
9104A



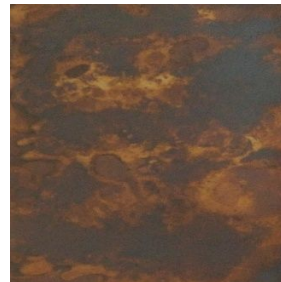
9106A



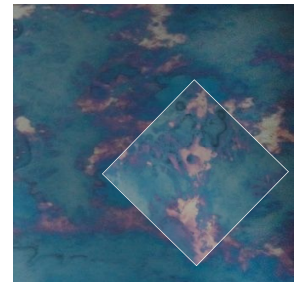
9113A



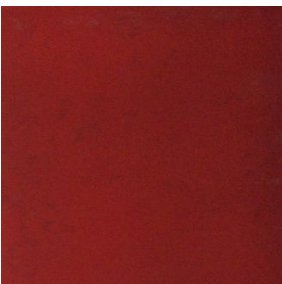
9109A



9142 GoldA



9143A



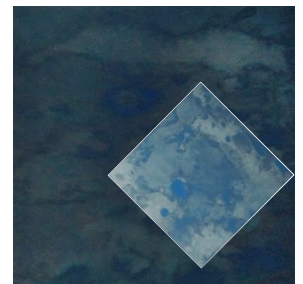
9142 RedA



9142 WhiteA



9142 GreenA



9142 BlueA

Please note that as the process to manufacture Antique Mirror is done manually, the samples shown are for reference only and not a consistent or guaranteed representation of the mirror.

Available in 6mm thickness or can be applied to your own glass!

9142 style available in custom colours, 9106 (Gold Vein) finish can be applied to any other Antique type.